

THE WARRÉ HIVE, meant for hands-off, minimalist and sustainable beekeeping practices, is used extensively by backyard beekeepers in the United States and Europe and in a number of large commercial apiaries. Abbé Émile Warré experimented with some 350 hives of various designs with the aim of producing a hive that was simple, economical, bee-friendly and which assured a surplus of honey for the beekeeper. The result was a hive whose construction and operation is described in his book (and free e-book) “Beekeeping For All”. Rather than “supering,” or adding empty boxes to the top of the hive, Warré hives are “nadired,” meaning that empty boxes are added to the bottom. This mimics the environment of a wild colony, as bees prefer building downwards from the top of their cavity. A Warré hive is a vertical top bar hive having eight foundationless top bars in each box. As these hives were designed most specifically for overwintering of bees in the cold French climate, they provide a comfortable home for honeybees to flourish in the Pacific Northwest.

PACKING LIST for the Warré hive kit

- 94 #6 Al. ring shank nails (2" long) and 96 #3 Al. nails (1-1/4" long)
- Roof: 8 pieces lumber
- Quilt: 4 pieces lumber, 1 burlap bottom
- Boxes: 12 pieces lumber, 6 wooden handles, 3 wooden bungs (makes 3 boxes)
- Bottom: 5 pieces lumber
- Top bars: 24+ wooden bars, 1 burlap cover cloth, and beeswax (for top bars)

NOTES:

- Pre-drill 1/8" diameter for all #6 nails and pre-drill 5/64" diameter for all #3 nails.
- Glue all wood joints for best construction. Titebond III is a good glue for these hives.
- Into groove of warmed top bars, pour melted beeswax for guiding bees where to start combs.
- See Warré’s book “Beekeeping for All” for instructions on the cover cloth and burlap bottomed quilt.

This kit does NOT include:

wood glue, rye flour for cover cloth treatment, or paint for hive exterior.

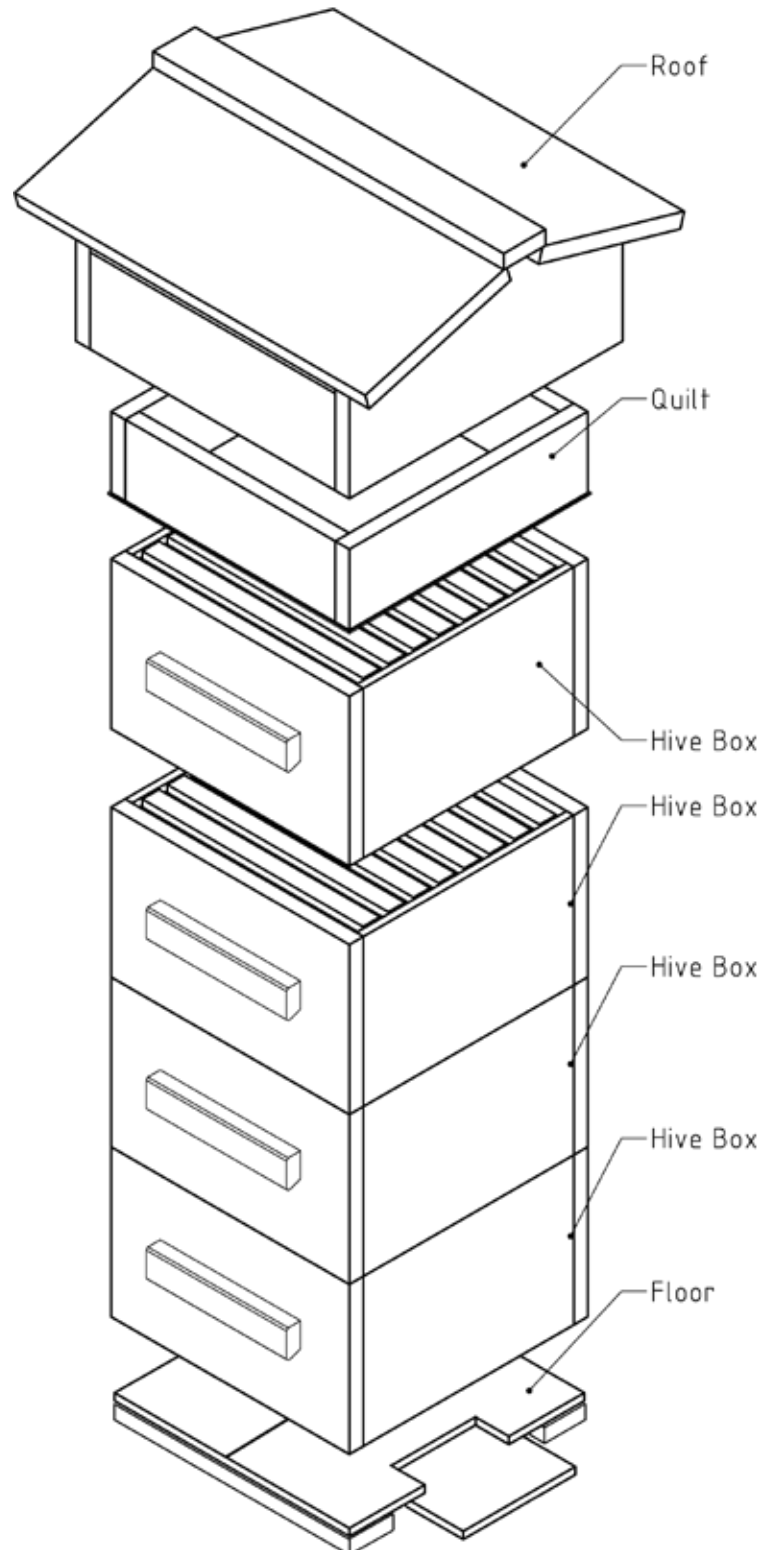
Warré Bee-Friendly Hives

YOU MAY FIND a free e-book (PDF) of Abbé Warré's book "Beekeeping for All" at <http://warre.biobees.com/bfa.htm>. This book should be read by all Warré beekeepers. You may download it for free and have it bound at a local printer, or you may purchase the bound edition.

I encourage you to also read "The Complete Idiots Guide to Beekeeping" by Dean Stiglitz and Laurie Herboldsheimer. This is a very good and inexpensive book on general beekeeping, find at Amazon.com.

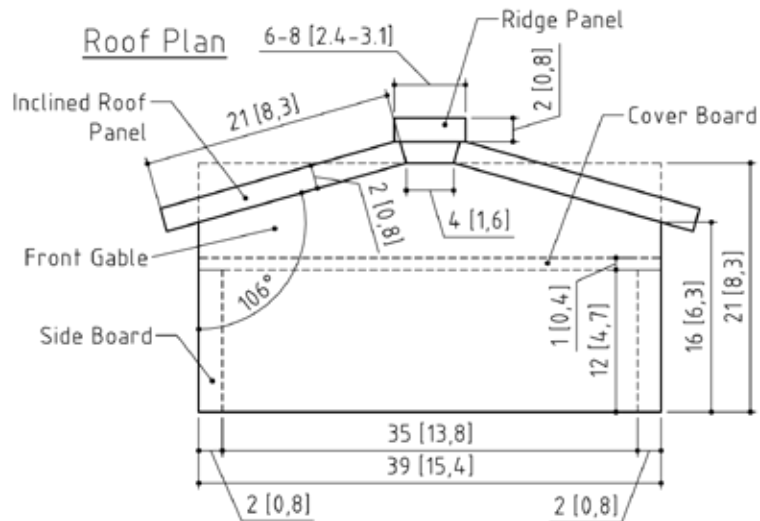
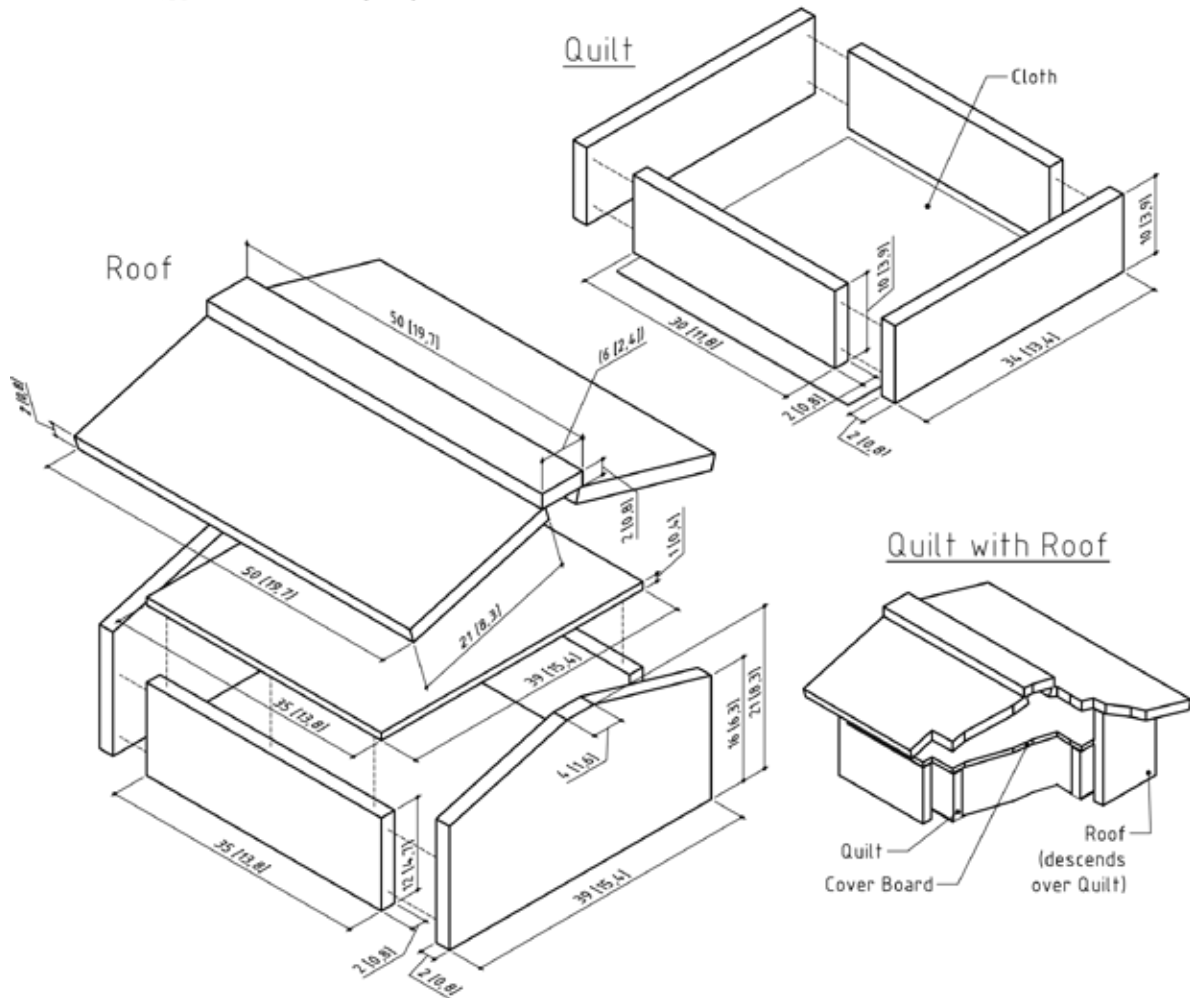
For more on the Warré hive itself see www.warre.biobees.com

For more on the scientific basis of bee-friendly beekeeping and to learn more about sustainable beekeeping with Warré beehives, you will want to read "The Bee-Friendly Beekeeper: A Sustainable Approach" by David Heaf www.bee-friendly.co.uk I recommend "Nine Lectures on Bees" by Rudolf Steiner, on the wisdom contained in the beehive.



Warré Bee-Friendly Hives

Diagram of Roof and Quilt
-Measurements in cm [inch]



1



ATTACH LANDING BOARD & BOTTOM RAILS USING ±18, #3 NAILS.

4



SET #3 NAILS AT PRE-PUNCHED DIVITS. SNIP LEAVING 1/8 INCH NUBS.

2



ASSEMBLE ROOF BODY, #6 NAILS. ATTACH COVER BOARD, #3 NAILS.

5



MOUNT HANDLES 2 INCHES FROM TOP. USE 3, #6 NAILS PER HANDLE.

3



ATTACH SLOPED TOP, #6 NAILS. RIDGE CAP, #3 NAILS ± 2" APART.

6



STAPLE RAW BURLAP TO THE BOTTOM (ONLY) OF QUILT BOX.